

ADMISSIONS Roadmap



may this be a helpful guide as your loved one moves from their current home to their new home



● make contact

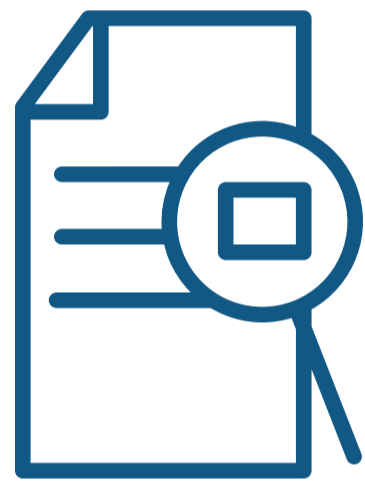
set up time for tour and care consult

● take a tour

receive admissions packet of information

● complete application

submit application for admission to be reviewed



● registry check

sex offender registry will be checked

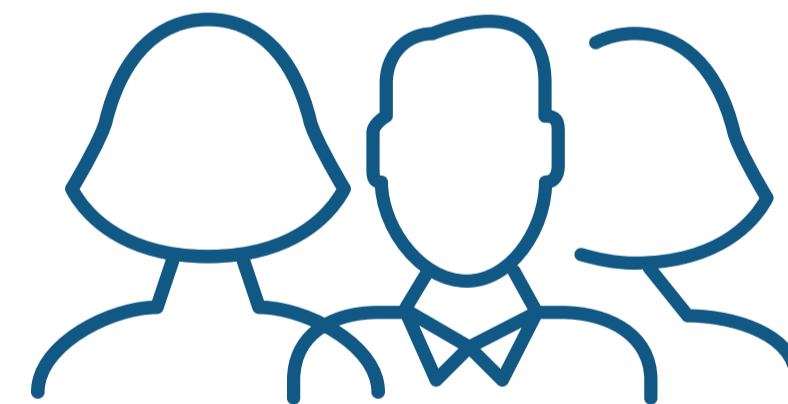
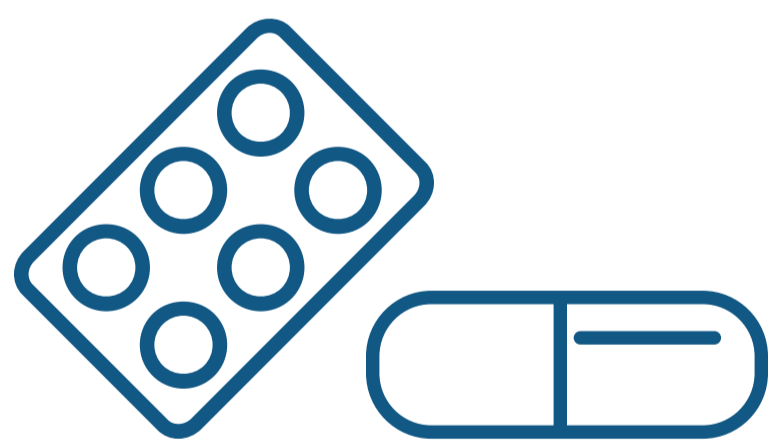
● financial review

financial and insurance info. will be reviewed by PLH and associated partners

● health information

contact primary care physician to send recent* physical and history to PLH for nursing staff review

*Physical must have been within last 3 months, so you may need to have a new one done prior to admission



● medication review

provide medication list to PLH or have pharmacy provide list for nursing staff review

director review

medical information will be submitted to the PLH Medical Director for approval

PLH review

the PLH admissions team may grant approval or set up a meeting to further assess applicant's needs in person

● this colored dot indicates the need for your completion of or involvement in the step

