

Admissions Roadmap

Use this helpful guide as your loved one transitions from their current home to their new home with our Christian caring family.



1. make contact
set up time for tour and care consult



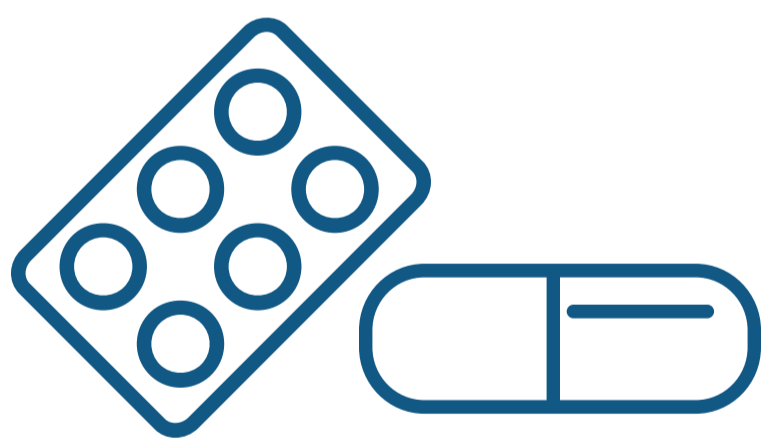
2. take a tour
receive admissions packet of information



3. complete application
submit application for admission to be reviewed



6. health information
contact primary care physician to send recent* physical and history to us for nursing staff review
*Physical must have been within last 3 months, so you may need to have a new one done prior to admission



7. medication review
provide medication list to us or have pharmacy provide list for nursing staff review



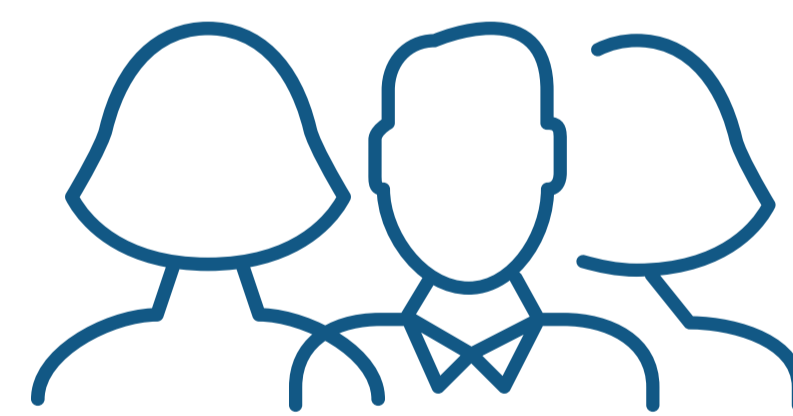
5. financial review
financial and insurance info. will be reviewed by our team and associated partners



8. director review
medical information will be submitted to our Medical Director for approval



4. registry check
sex offender registry will be checked



9. internal review
the admissions team may grant approval or set up a meeting to further assess needs

● this colored dot indicates the need for your completion of or involvement in the step



10. move and settle in