

# Admissions Roadmap

Use this helpful guide as your loved one transitions from their current home to their new home with our Christian caring family.



**1. make contact**  
set up time for tour and care consult

**2. take a tour**  
receive admissions packet of information

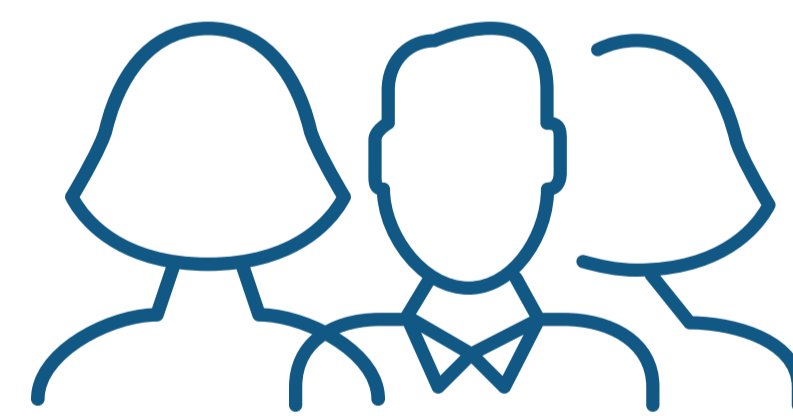
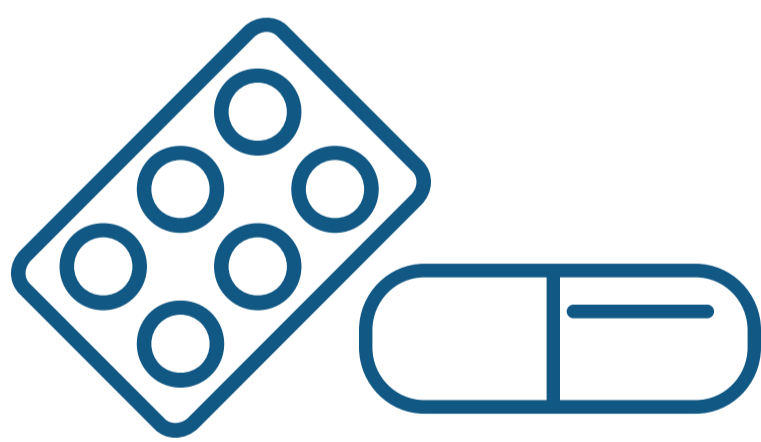
**3. complete application**  
submit application for admission to be reviewed



**6. health information**  
contact primary care physician to send recent\* physical and history to us for nursing staff review  
\*Physical must have been within last 3 months, so you may need to have a new one done prior to admission

**5. financial review**  
financial and insurance info. will be reviewed by our team and associated partners

**4. registry check**  
sex offender registry will be checked



**7. medication review**  
provide medication list to us or have pharmacy provide list for nursing staff review

**8. director review**  
medical information will be submitted to our Medical Director for approval

**9. internal review**  
the admissions team may grant approval or set up a meeting to further assess needs

**●** this colored dot indicates the need for your completion of or involvement in the step



**10. move and settle in**